



Weeks 24-25: June 13-June 26, 2010



Summary

The Florida Department of Health (FDOH) monitors multiple surveillance systems such as the Electronic Surveillance System for the Early Notification of Community-based Epidemics (ESSENCE), the Florida Pneumonia and Influenza Mortality Surveillance System (FPIMSS), notifiable disease reports (Merlin), National Respiratory and Enteric Virus Surveillance System (NREVSS), EpiCom, and Florida ILINet in order to track influenza activity in the state.

- State:**
- Influenza-like illness (ILI) activity is low in many of our monitoring systems. Influenza activity levels seen in ESSENCE and ILINet are similar to previous non-pandemic years at this time.
 - In weeks 24-25, no specimens tested by the Bureau of Laboratories (BOL) tested positive for influenza. One influenza hospitalization was reported in Marion County.
 - No other pathogens are currently causing significant levels of influenza-like illness in Florida.

TABLE 1: Summary of Florida Influenza-Like Illness (ILI) Activity for Week 25

Measure	Difference from previous week	Current week 25	Previous week 24
Percent of visits to ILINet providers for ILI	▼ 0.2	0.6%	0.8%
Percent of emergency department visits (from ESSENCE) due to ILI	▲ 0.1	1.2%	1.1%
Percent of hospital admissions (from ESSENCE) due to ILI	No Change	0.2%	0.2%
Percent of laboratory specimens that were positive for influenza (of 22 specimens tested in week 25)	No Change	0.0%	0.0%
Number of ILI outbreaks reported in Epi Com	No Change	0	0
Number of 2009 H1N1 Cases Reported	▲ 1	1 Hospitalization	0
Number of Pediatric Influenza Deaths Reported	No Change	0	0

June 30, 2010

Posted on the Bureau of Epidemiology website: http://www.doh.state.fl.us/disease_ctrl/epi/swineflu/Reports/reports.htm

Produced by: Bureau of Epidemiology, Florida Department of Health (FDOH)

Contributors: Colin Malone, MPH; Anita Ofori-Addo, MPH; Aaron Kite-Powell, MS; Brian Fox, MA; Kate Goodin, MPH; Leah Eisenstein, MPH; Lillian Stark, PhD, MPH, MS; Valerie Mock; Julian Everett B.S.; Subir Goyal, MBBS, MPH; Janet Hamilton, MPH; Richard Hopkins, MD, MSPH

In this Issue:

Summary	1
NREVSS Respiratory Virus Surveillance	1
Outpatient Influenza-like Illness Surveillance Network (ILINET)-Statewide	2
ESSENCE Syndromic Surveillance Summary-Statewide	2
Florida Pneumonia and Influenza Mortality Surveillance (FPIMSS)	2

NREVSS Respiratory Virus Surveillance

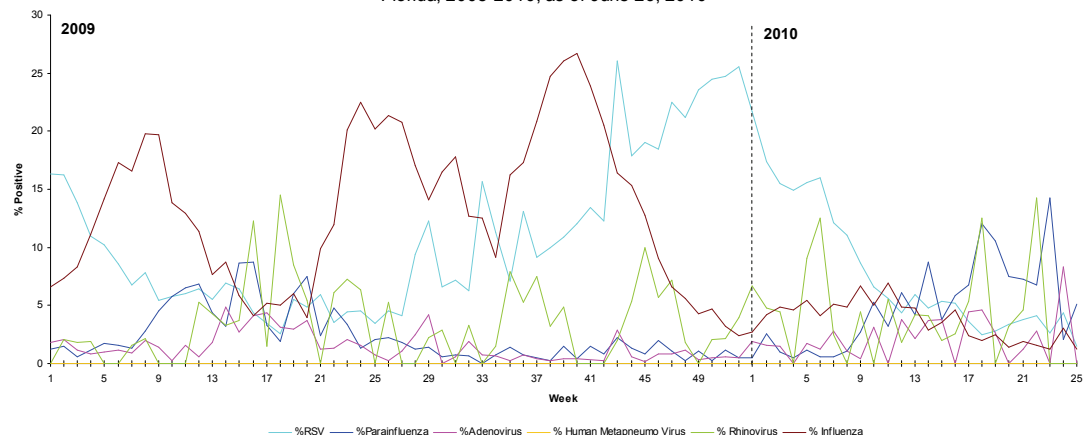
The National Respiratory and Enteric Virus Surveillance System (NREVSS) collects data from laboratory facilities around the country on a weekly basis. NREVSS monitors temporal and geographic patterns of respiratory syncytial virus (RSV), human parainfluenza viruses (HPIV), respiratory and enteric adenoviruses and rotavirus. Florida has over 45 participating laboratory facilities.

FIGURE 1 shows the percentage of positive tests for multiple respiratory viruses reported by NREVSS-participating laboratories in Florida

The six respiratory viruses summarized in Figure 1 are:

- RSV
- Parainfluenza 1-3 (HPIV)
- Adenovirus
- Human Metapneumo Virus
- Rhinovirus
- Influenza

Figure 1: Percentage of Positive Respiratory Virus Tests as Collected by NREVSS, Florida, 2008-2010, as of June 26, 2010

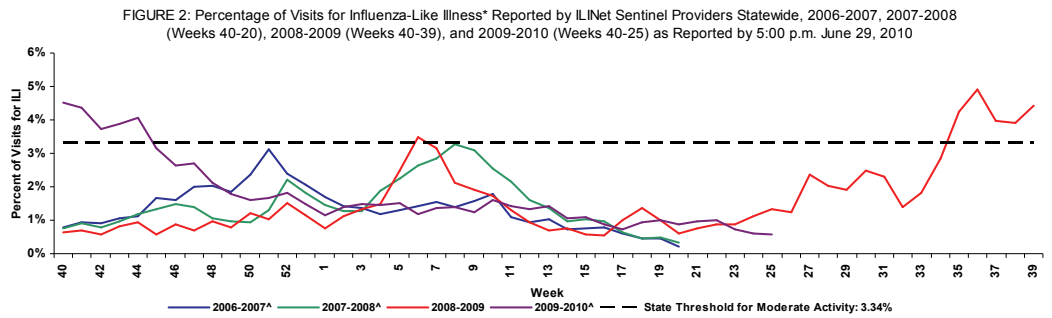


Note: In April, May, and June, the percentage of positive parainfluenza tests has increased dramatically. Concurrently, the number of parainfluenza tests performed each week declined, resulting in an increase in percent positive. During peak activity in 2009, there were 400-800 tests performed each week, compared with between 25-100 each week in recent months. The majority of parainfluenza viruses are type 3.

FIGURE 2 shows the percentage of visits for influenza-like illness* reported by ILINet Sentinel Providers statewide.

Percentage of visits for ILINet Sentinel providers continue to be at low levels.

Note: Small numbers of sentinels reporting year-round may make ILI estimates inaccurate.



*ILI = Influenza-like illness, fever >100°F AND sore throat and/or cough *in the absence* of another known cause.

**The 2009—2010 threshold for moderate activity is calculated from ILINet data. The threshold for moderate activity is the mean percentage of patient visits for ILI during influenza weeks for the previous three seasons plus two standard deviations. Only weeks with 10% or greater of laboratory specimens testing positive are included in the calculation. Due to wide variability in regional level data, it is not appropriate to apply the state baseline to regional data.

^There is no week 53 during the 2006-2007, 2007-2008, and 2009-2010 seasons; the week 53 data point for those seasons is an average of weeks 52 and 1.

ESSENCE Syndromic Surveillance Summary-Statewide

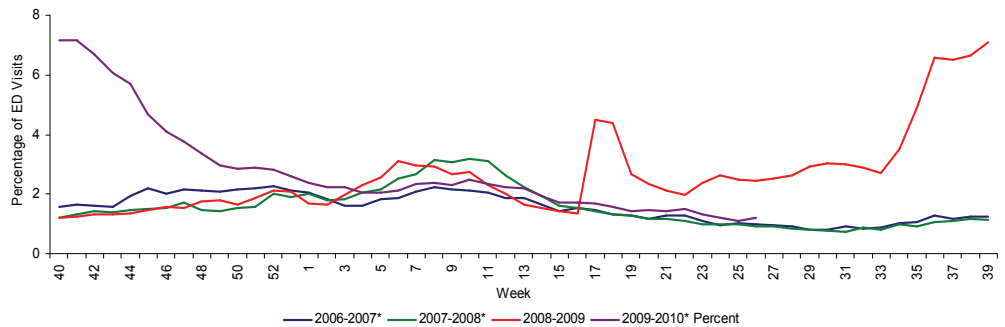
The Electronic Surveillance System for the Early Notification of Community-based Epidemics (ESSENCE) currently collects data daily from 143 hospital emergency departments (ED). Data are processed into 11 different syndrome categories based on the patient's chief complaint. One category is influenza-like illness (ILI), which comprises chief complaints that include "influenza" or "flu," or either fever and cough or sore throat.

FIGURE 3 shows ESSENCE data on ILI visits to Emergency Departments as a percentage of all ED Visits.

Overall activity for influenza-like illness reported in ESSENCE is near expected levels for this time of year.

Percentage of ILI visits to Florida ED are slightly higher than previous summers, but much lower than during the 2009 H1N1 pandemic.

FIGURE 3: Influenza-like Illness Visits (by Chief Complaint) to Emergency Departments (ED) as a Percentage of All ED Visits, Florida ESSENCE Participating Hospitals (N=143), Week 40, 2006 through June 30, 2010



Florida Pneumonia and Influenza Mortality Surveillance

The Florida Department of Health started the Florida Pneumonia and Influenza Mortality Surveillance System (FPIMSS) in 2006 in order to more timely assess the number of pneumonia and influenza deaths occurring in the state. This system was modeled on the CDC's 122 cities surveillance system. Each week, the vital statistics office in the 24 most populous counties in Florida manually reviews the death certificates received for the previous week. Any mention of pneumonia or influenza on the death certificate, with certain prescribed exceptions, is counted as a pneumonia or influenza death. These counts, by age group, are then reported to the state via the EpiGateway web-interface. As of week 44 we are now using a Serfling model to more accurately calculate our predicted values for weekly pneumonia and influenza mortality.

FIGURE 4 shows Pneumonia and Influenza Deaths for 24 Florida Counties, 2006-2007, 2007-2008, 2008-2009, and 2009-2010

For week 25 (ending June 26, 2010) there were:

- 145 deaths reported
- Upper bound of 95% confidence interval for prediction: 148 deaths
- NO excess deaths

24 out of 24 participating counties reported their data for week 25.

FIGURE 4: Pneumonia and Influenza Deaths for 24 Florida Counties, 2006-2007 (Weeks 40-39), 2007-2008 (Weeks 40-39), 2008-2009 (Weeks 40-39), and 2009-2010 (Weeks 40-25) as Reported to FPIMSS by 12:00 p.m. June 30, 2010

